



About the Builder

Schumacher Homes is truly a custom home building company that also specializes in renovations and additions. Michael believes that building or remodeling homes should be a pleasant, enjoyable experience for the homeowner. About his company, Michael says, "Working with homeowners to create a finished product that's within budget and on-time is my number one goal. However, I also love what I do- taking owners' dreams from blue-prints to reality." Schumacher Homes provides its clients with a one-on-one relationship with Michael. He is on his job sites multiple times a day and supervises all aspects of the daily construction processes. Because Schumacher Homes is not a developer nor a speculative builder, Michael is able to provide clients with close attention to detail and craftsmanship that sets him apart from all the other builders, and that is what makes Schumacher Homes the sole name in custom homes.

"I grew up in Auburn, and I'm happy my children get to experience growing up here as well. I take pride in my hometown, and I want the homes I build here to last for generations to come." -Michael Schumacher

Graymoor

AT THE PRESERVE



Exclusively Listed by



BERKSHIRE HATHAWAY
HomeServices
Preferred Real Estate



RYAN ROBERTS, REALTOR®

ryanrobertsrealtor.com
c.ryan.roberts@gmail.com
334.750.9872



Graymoor

AT THE PRESERVE

List of Standards



- ▶ Monolithic slab foundation
- ▶ Low maintenance 4-sides brick
- ▶ Architectural shingles 2/ limited lifetime warranty
- ▶ Pella ProLine Clad Windows
- ▶ 9' smooth ceilings first floor and 8' on the second
- ▶ 8' doors on the first floor and 6'8" on the second
- ▶ 5' engineered hardwoods in the foyer, kitchen, dining, family, mud room & downstairs halls
- ▶ 7" crown molding in the foyer, kitchen, dining, family, powder, mud room, halls & master bedroom
- ▶ 7-1/4" baseboards throughout
- ▶ Ceiling fan with light kit in family room and all bedrooms
- ▶ Tile flooring in the laundry room & bathrooms
- ▶ Gas fireplace with mantle & surround
- ▶ Wire shelving in all closets
- ▶ Full finished garage (sheetrock, paint, baseboard, lights, outlet)
- ▶ Large kitchen island
- ▶ Stainless steel appliances
- ▶ Cabinet vent hood over range
- ▶ Granite or Quartz countertops
- ▶ Single bowl stainless steel sink in kitchen
- ▶ Tile backsplash in kitchen
- ▶ Under cabinet LED lighting in kitchen with pendants over island
- ▶ Recessed cans lighting in kitchen
- ▶ Tile walls in master shower
- ▶ Semi frameless master shower
- ▶ Ceramic tile floors in the bathrooms
- ▶ Steel enameled tubs with tile walls in secondary bedrooms on main floor
- ▶ Custom vanities in powder bath
- ▶ Energy efficient
- ▶ Programmable digital thermostat
- ▶ Tankless programmable gas water heater
- ▶ Gas cooktop
- ▶ Smoke and carbon monoxide detectors
- ▶ Outlets in garage
- ▶ 1 year warranty on all work and material
- ▶ Gas stub for grill
- ▶ Customizable floor plans

All prices, amenities, floor plans and terms are subject to change at any time without notice. Builder may change, modify, add or remove any of the information on this pamphlet without prior notice and may change, modify, add or remove any portion of these terms and conditions at any time.

Graymoor

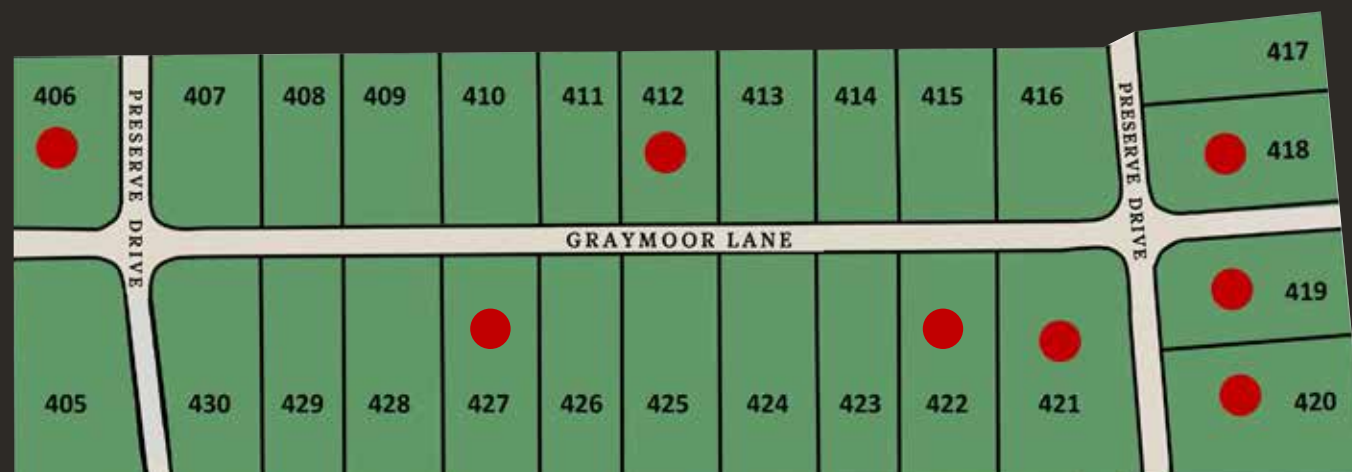
AT THE PRESERVE

Offering Auburn's finest custom builders in a tranquil setting, Graymoor at the Preserve is the perfect spot to build your dream home!

Graymoor at the Preserve is located in North Auburn on 93 acres bordered by Auburn University agricultural land and protected wetlands, assuring a calm and peaceful setting for generations to come. Amenities include future pool, pavilion and common areas.

Call today or visit graymooratthepreserve.com

● SOLD



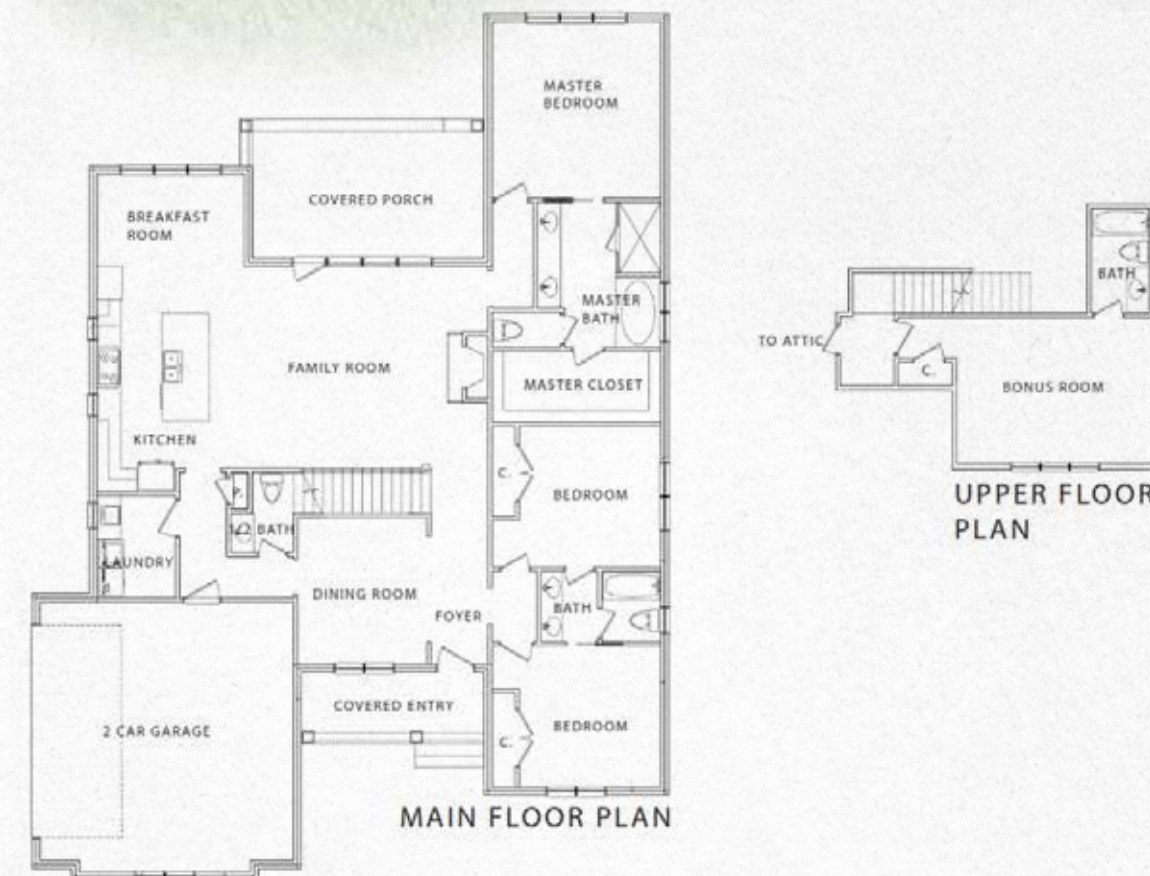
Exclusively Listed by



BERKSHIRE HATHAWAY
HomeServices
Preferred Real Estate

PLAN 1

4 Beds
3.5 Baths
2,701 +/- SF



All prices, amenities, floor plans and terms are subject to change at any time without notice. Builder may change, modify, add or remove any of the information on this pamphlet without prior notice and may change, modify, add or remove any portion of these terms and conditions at any time.

PLAN 2

4 Beds
3 Baths
2,542 +/- SF

Graymoor

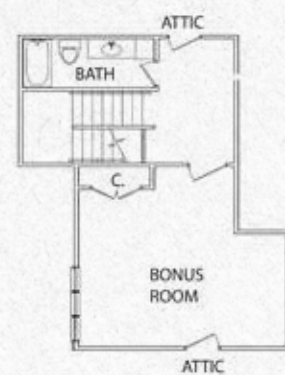
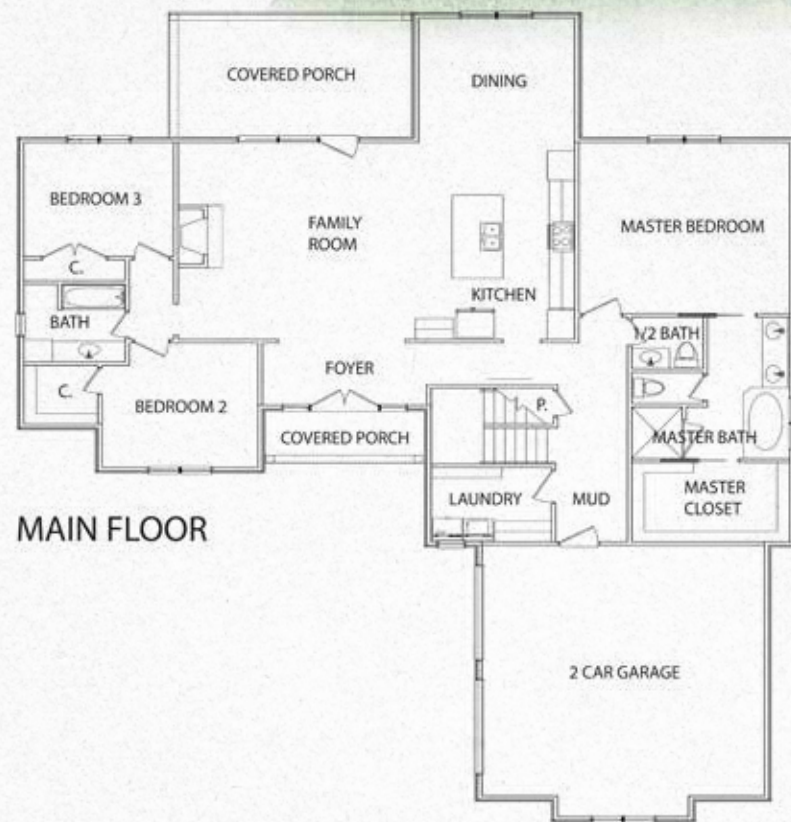
AT THE PRESERVE

Gallery



PLAN 4

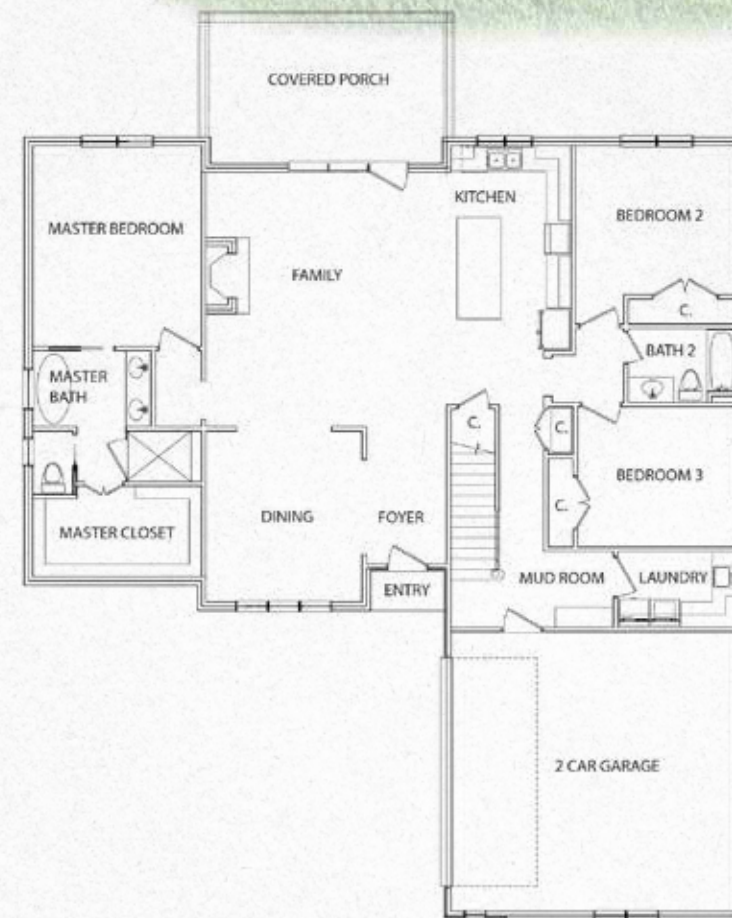
4 Beds
3.5 Baths
2,677 +/-SF



2ND FLOOR

PLAN 2

4 Beds
3 Baths
2,542 +/-SF



MAIN FLOOR



2ND FLOOR

All prices, amenities, floor plans and terms are subject to change at any time without notice. Builder may change, modify, add or remove any of the information on this pamphlet without prior notice and may change, modify, add or remove any portion of these terms and conditions at any time.

All prices, amenities, floor plans and terms are subject to change at any time without notice. Builder may change, modify, add or remove any of the information on this pamphlet without prior notice and may change, modify, add or remove any portion of these terms and conditions at any time.

PLAN 3

4 Beds
3.5 Baths
2,782 +/- SF

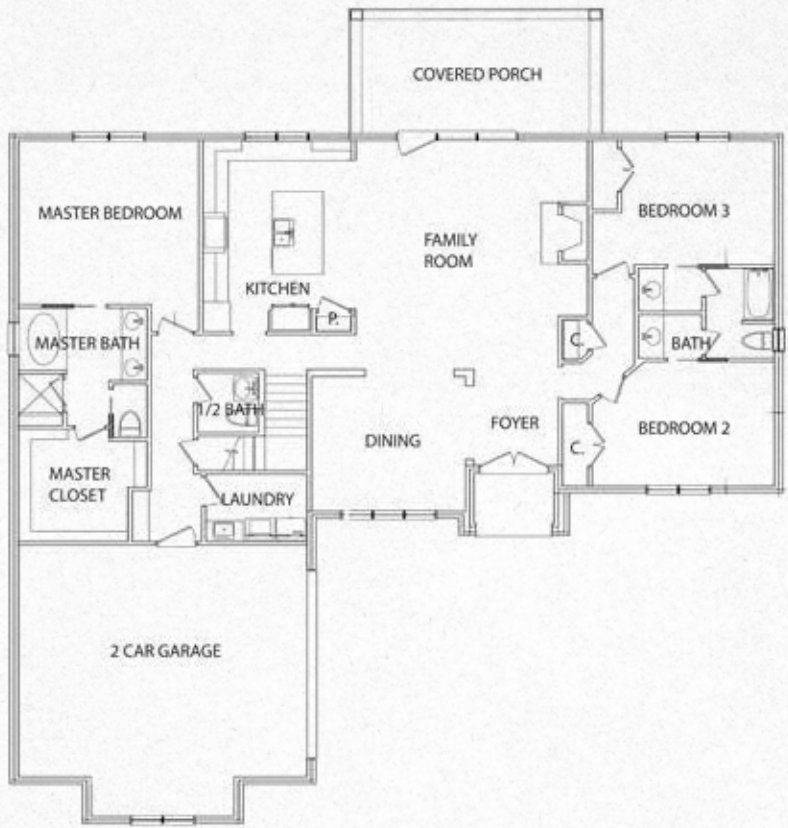
Graymoor

AT THE PRESERVE

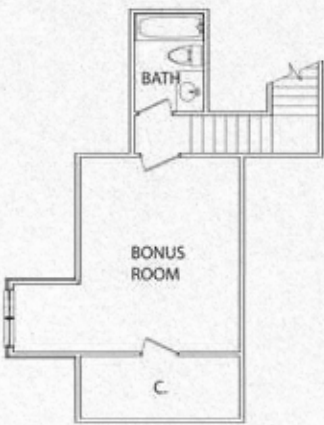
PLAN 3

4 Beds
3.5 Baths
2,782 +/- SF

SCHUMACHER
HOMES
THE SOLE NAME IN CUSTOM HOMES



MAIN FLOOR



2ND FLOOR

All prices, amenities, floor plans and terms are subject to change at any time without notice. Builder may change, modify, add or remove any of the information on this pamphlet without prior notice and may change, modify, add or remove any portion of these terms and conditions at any time.